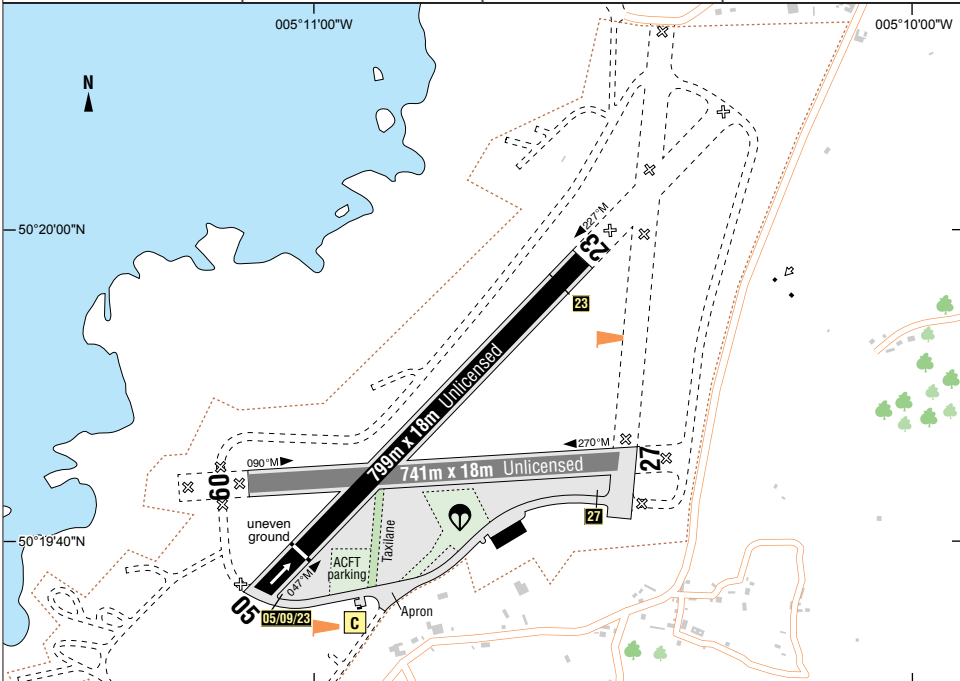


| | | | | | |
|----------------|---|------------|--------------------------------|------------------------------|--------------------------|
| 330ft 12hPa | 1.5nm SW of Perranporth N5019.83 W00510.77 | PPR Tel | Alternative AD Diversion AD | Newquay (EGHQ) Bodmin (EGLA) | Non-standard join |
|----------------|---|------------|--------------------------------|------------------------------|--------------------------|

| | | | |
|-------------|--------------------------|------------------------|----------------|
| Perranporth | LARS Culdrose 134.050 | APP Newquay 133.405 | A/G 119.755 |
|-------------|--------------------------|------------------------|----------------|



| RWY | SURFACE | TORA | LDA | U/L | LIGHTING | Airfield Operations | | | |
|--|---------|------|-----|--------|----------|---------------------------|--|--|--|
| 05/23 | Asphalt | | | 799x18 | Nil | | | | |
| 09/27 | Asphalt | | | 741x18 | Nil | RNAV | | | |
| Rwy09/27 restricted use, advice with PPR | | | | | | LND 114.200 058 21 | | | |

Remarks
Strictly PPR by telephone. Arr from N & E contact Newquay RAD at 25 nm. Arr from S & W contact Culdrose RAD during hours of watch, if not active contact Newquay RAD. Parts of the manoeuvring area prone to loose gravel. No exits from Rwys05 & 27, backtrack to intersection.

Warnings
 AD is located within the Culdrose AIAA. Parachuting from 15,000ft in overhead. No overhead joins when parachuting in progress. Remain clear of DZ until "All Canopies on the Ground" is broadcast. Taxilanes from apron to Rwy05/09/23 hold is useable. Wingtip clearance is not assured on Taxilanes from apron to intersection (grass) and apron to Rwy27 hold (asphalt).
Caution: Rwy27 Take-off: Rotor/Curl-over forms between cliff edge & intersection in onshore winds over 10kts: Windshear, >±10kts head/tail wind, >1000ft/min sink with stall/loss of control and ground impact. Severe Turbulence. Rwy09 Landing: Waterfall effect over cliff edge with >1000ft/min sink. Cliff impact.

| | |
|----------------------------|-------------------------------|
| Operating Hrs | Mon-Sun 0900-1700 or SS (L) |
| Circuits | N of AD 1330ft QNH 1000ft QFE |
| Landing Fee | See website |
| Maintenance | Nil |
| Fuel | AVGAS |
| Disabled Facilities | |
| | |
| Restaurants/Hotels | Hotels in Perranporth |
| Taxis | |
| St Agnes Taxi | Tel: 07778 436753 |
| Car Hire | Available on request |

| | |
|--|---|
| Weather Info | Air SW MOEx |
| Operator | Perranporth Airfield Ltd The Airfield, Higher Trevellas St Agnes, Cornwall, TR5 0XS Tel: 01872 552856 (AD/PPR) Tel: 01872 552266 (Flying Club) perranporthflyingclub@live.co.uk www.perranporthairfield.com |
| Perranporth Noise Abatement Procedure | Avoid flying directly over St Agnes, Perranporth & villages S and E of AD. All rejoins deadside descending, crosswind at low power. No straight in approaches. Low power/glide approaches appreciated. After take-off, when practicable, reduce to climb power and follow noise abatement tracks before proceeding on course. |

© Copyright 2021 AFE Ltd. All rights reserved.
 Effective date: 28/01/2021
 Not to Scale OP 21G

Perranporth Circuit Procedures

Effective date: 28/01/2021 © Copyright 2021 AFE Ltd. All rights reserved

Not to Scale

